

CAREER & MAJOR READINESS

(CAREER INTEREST ASSESSMENT)

**SOAR COLLEGE BOOT CAMP
JULY 7-10, 2025**



**DO YOU HAVE A
CAREER IN MIND FOR
YOUR FUTURE?**

**WHICH MAJOR WILL
GIVE YOU THE BEST
ACCESS TO YOUR
FUTURE GOALS?**

HAVE YOU EVER TAKEN A CAREER ASSESSMENT?

- Career Assessments allow us to connect our interests, passions, and natural abilities to our future goals.
- These assessments can help you gain a deeper understanding of yourself and your potential career path.

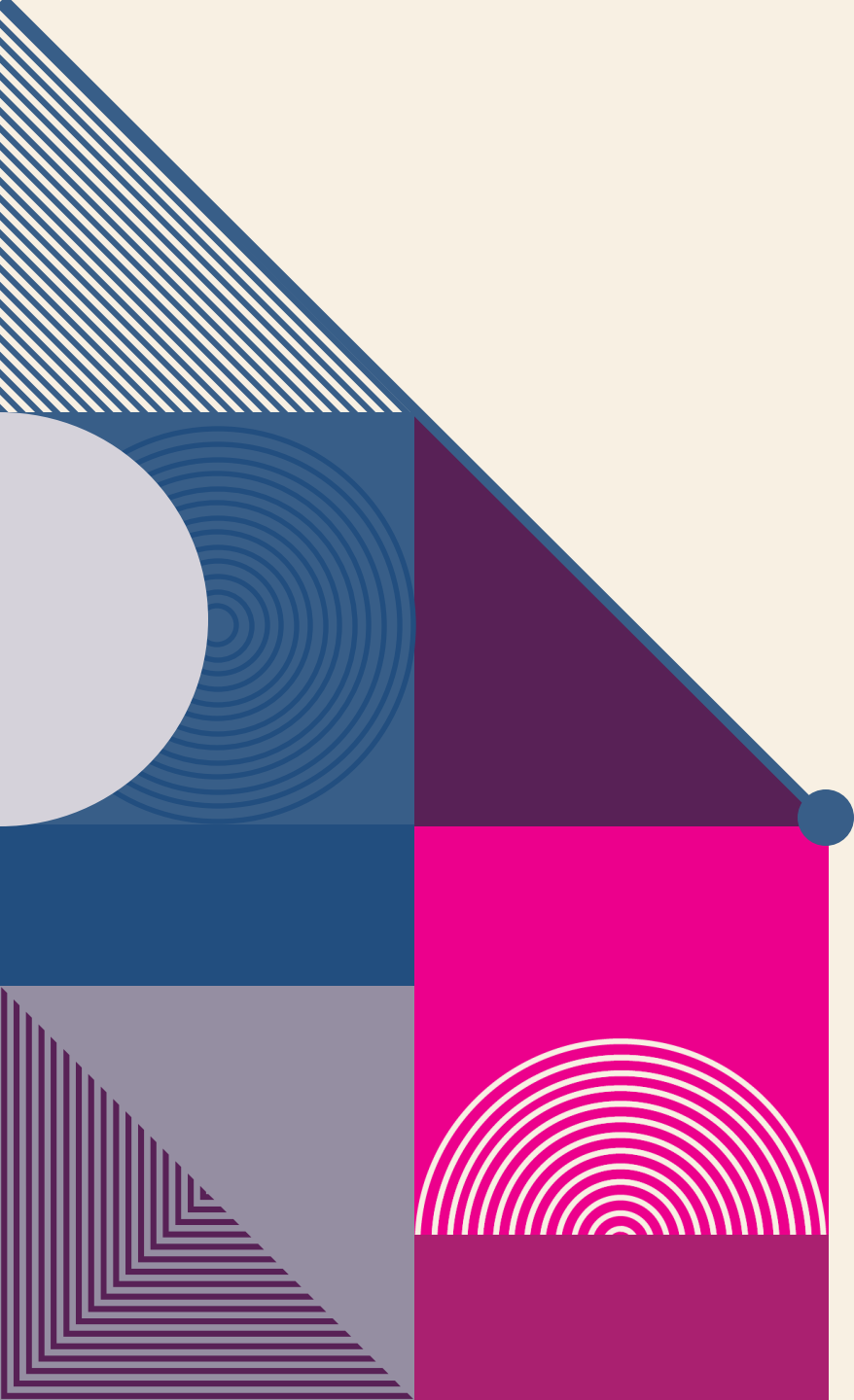




WHAT IS THE PURPOSE OF A CAREER ASSESSMENT?

Career Assessments Provide:

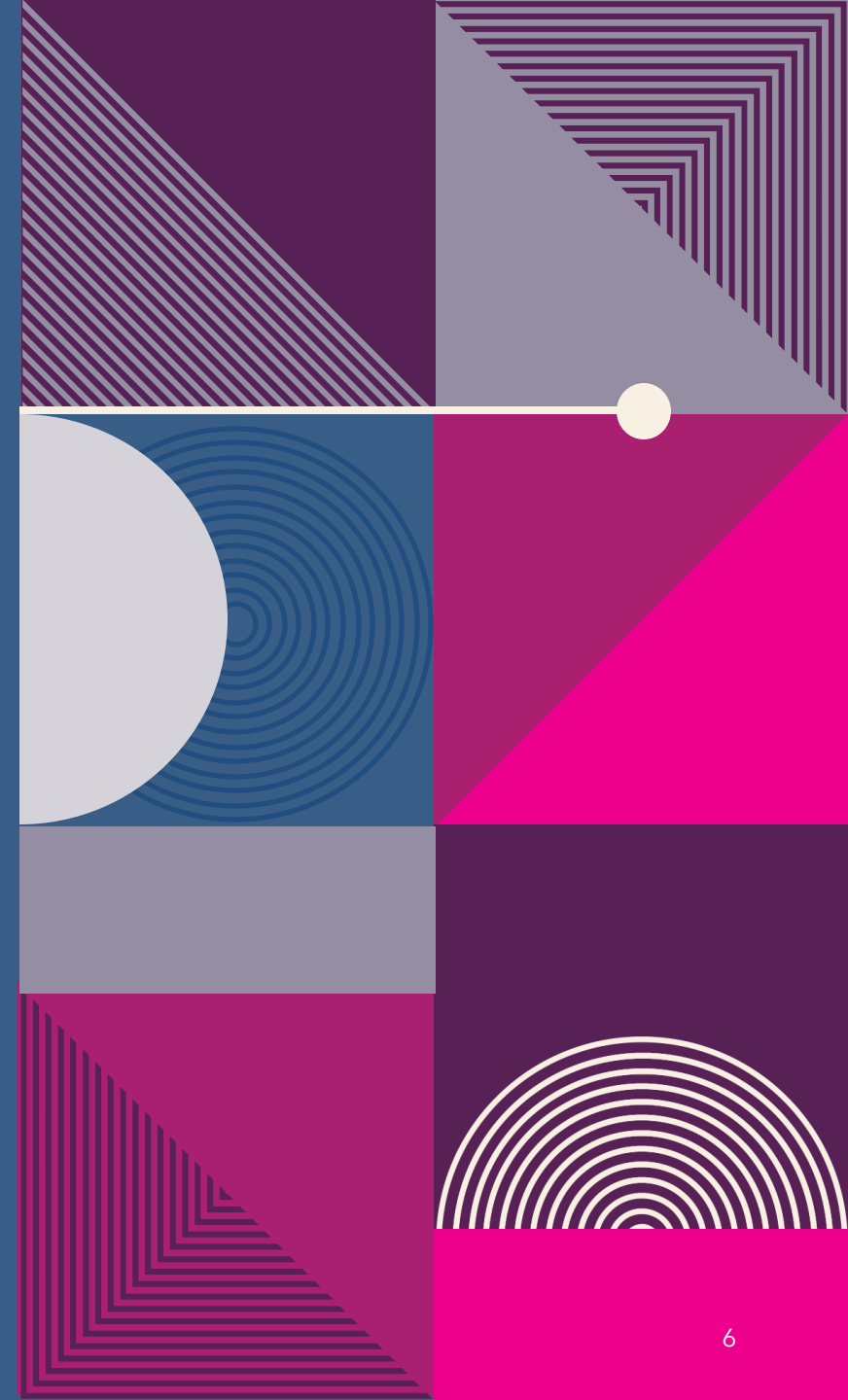
- ✓ **Self-Discovery** (identify your unique strengths, weaknesses, & preferences)
- ✓ **Career Exploration** (new careers you may not have considered)
- ✓ **Informed Decision Making** (confident decision-making pertaining to your career path)
- ✓ **Increased Job Satisfaction** (aligning personality, interests, and skills will lead to greater job satisfaction)
- ✓ **Career Planning** (set realistic goals and develop strategies to achieve them)



**THE MOST CRUCIAL
GOAL OF A CAREER
INTEREST ASSESSMENT
IS TO KNOW ABOUT
VARIOUS CAREER
CHOICES IN DEPTH.**

TODAY YOU WILL BE TAKING THE CAREER INTEREST ASSESSMENT ON SCOIR...

- This assessment will help each student in their own path of self-discovery when it comes to better understanding their interests and how they'll fit into the workforce.
- As students identify their interests, they can narrow their search down even more in Scoir by filtering careers based on career clusters, education needed, income, and outlook.
- Students can also select their academic preferences to better match with colleges that support the education requirements of specific careers!



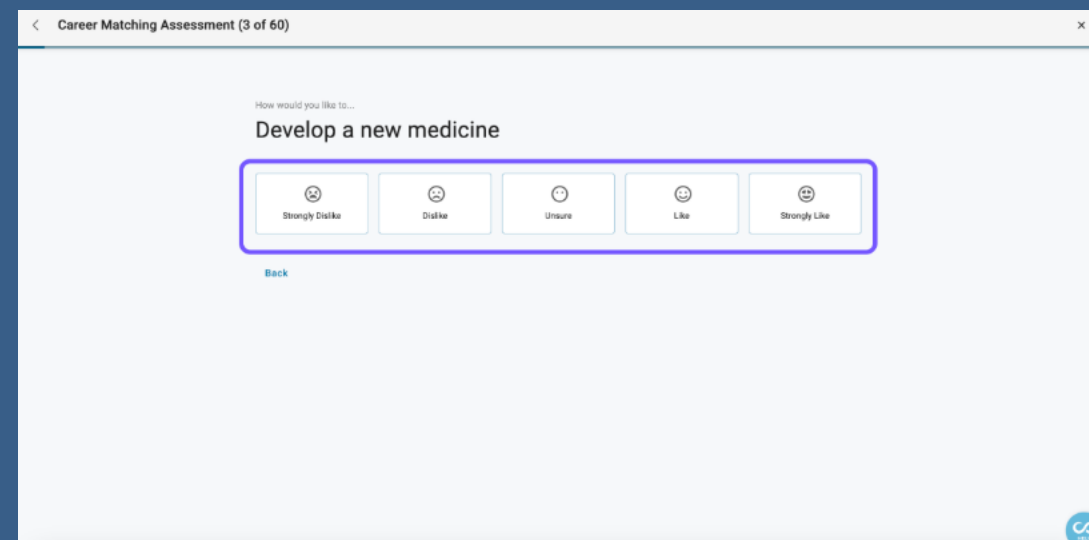
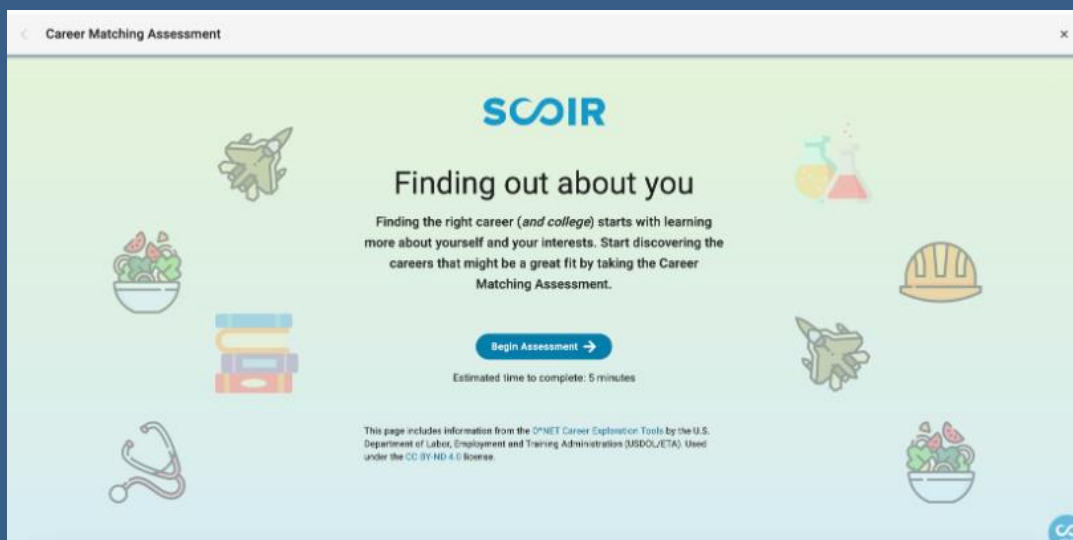
HOW TO ACCESS THE CAREER INTEREST ASSESSMENT...

1. Log-in to your **SCOIR** account
2. Under your name click, "**View Profile**"
3. Choose **Careers** in the left sidebar (or simply scroll down to reach that section)
4. Then, select **Your Assessments** and choose **Career Interest Assessment**.

Please Note:

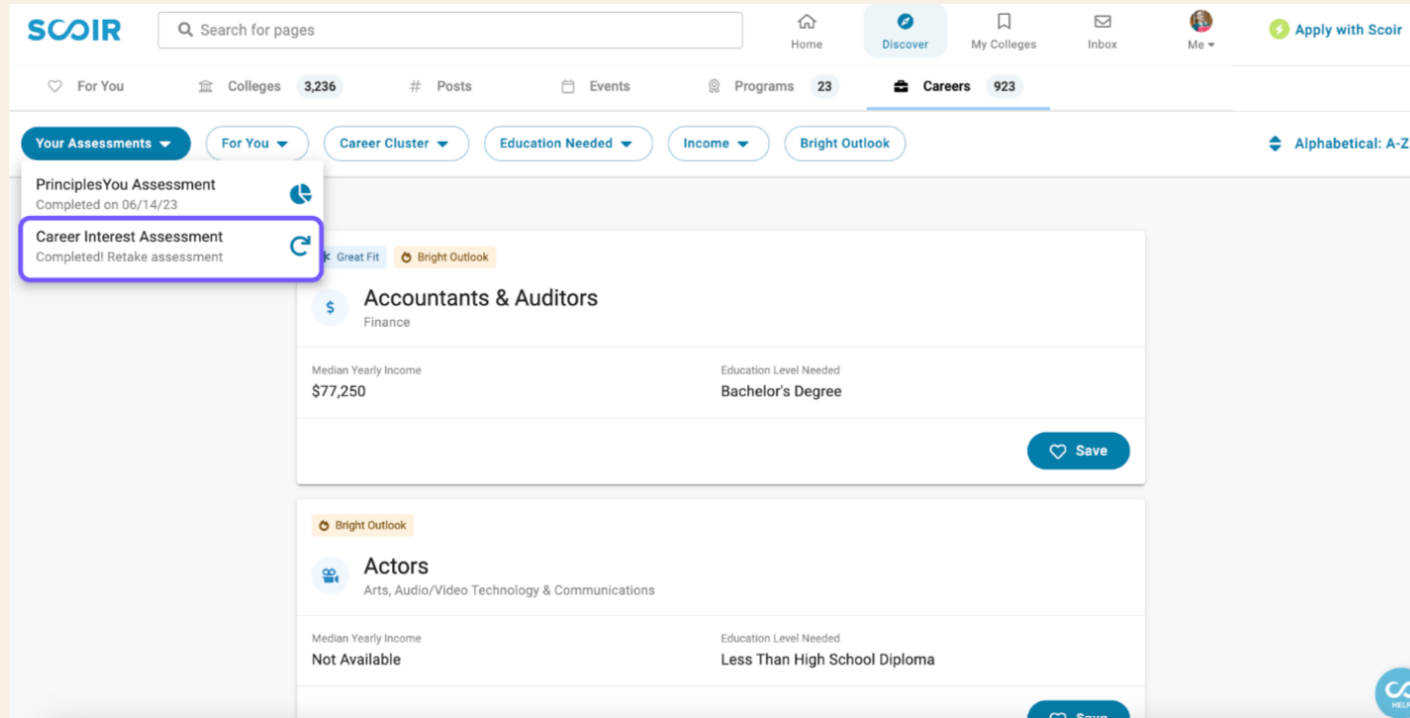
- The assessment can be finished in approximately 5 minutes.
- This assessment can be taken as many times as needed. It is encouraged that students finish the assessment in one sitting.

CAREER INTEREST ASSESSMENT FORMAT:



During the assessment, you'll walk through 60 questions that cover activities people perform when working in different careers. Show how much you like, or dislike, each activity by clicking on the **tile** with the response that suits you best. You will be able to click "back" to change a response as needed.

REVIEWING YOUR MATCHES...



- When completing the assessment, you'll be taken directly to **Careers** in Discover to view your matches.
- The Career Interest Assessment filter will already be selected for you.
- Spend time reviewing your matches.

WHAT SHOULD I CONSIDER WHILE REVIEWING MY RESULTS?



What did I observe about myself while analyzing these results?



What new information have I learned about my personality, strengths, and interests?



How will learning more about myself and strengths help me choose my future career?



Engage in deep self-reflection to identify your core values, passions, and strengths.

A decorative graphic on the left side of the slide, consisting of a vertical stack of four triangles pointing to the right. The top triangle is magenta with horizontal maroon lines. The second triangle is light purple with horizontal light grey lines. The third triangle is magenta with vertical maroon lines. The bottom triangle is light purple with horizontal magenta lines.

ANY QUESTIONS?

THANK YOU!